



MEMBER
ABYC[®]
Setting Standards for Safer Boating

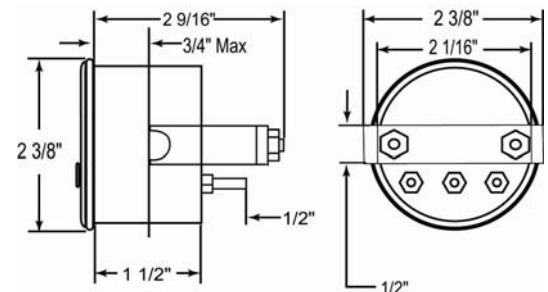
PA 300 series Blower Alarm



Have you ever left a pump running only to return to a mess, a burnt out pump or worse? Never forget your pump or blower is running again with the PA300 programmable alarm. A stainless steel piezo buzzer is built into this stylish gauge to alert and remind boat owners when time expires. The PA300 is wired directly to the device you want to time; when the device is on, so is the timer. Turn off the device and the PA300 shuts off automatically. At the touch of a button, this electronic audible timer provides preset times from 1 to 15 minutes. Once the selected time period has past, the alarm sounds and will continue to pulse until shut off or muted. If mute is pressed, the PA 300 silences the alarm and starts the timer again for the previously selected time cycle. The PA 300 is the perfect solution for reminding boat owners that a bilge blower or other device is still running thereby, preventing excessive battery drain or possible equipment damage.

FEATURES & BENEFITS

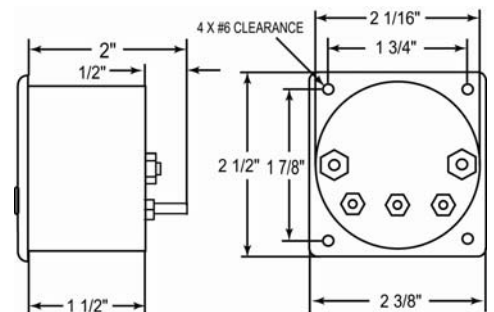
- *Microprocessor controlled*
- *No moving parts –no wear*
- *For use with 12Vdc or 24Vdc systems*
- *Preset times from 1 to 15 minutes*
- *Pressing mute restarts the timed cycle again*
- *Powers up with the device you want to time*
- *Exceeds both the United States Coast Guard and U.L. Standards*



PA300 RD (round)

SPECIFICATIONS

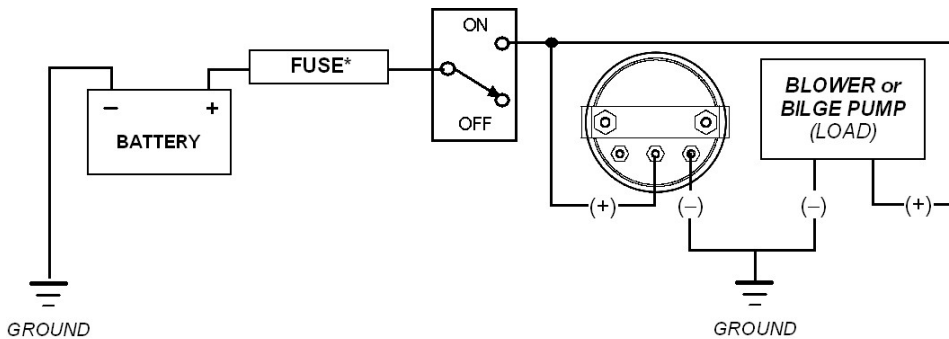
Power Required:	12Vdc (PA300) 24Vdc (PA300-24)
Power at Rest:	.020 amps
Power at Alarm:	.250 amps
Weight:	5.67 ounces
Square:	2.375" W x 2.5" H x 2" D
Round:	2.375" Diameter x 2.56" Deep



PA300 SQ (square)

Installation / Wiring Instructions

1. Disconnect the battery.
 2. The PA300 requires a 2 1/16" (53 mm) mounting hole with a maximum dash / bulkhead thickness of .75" (19mm) and a depth of approx 3 inch.
 3. Select a mounting location for the PA300 which clear of obstructions.
 4. Cut the opening, de-burr the hole and check that the PA300 will properly fit. DO NOT FORCE INTO HOLE.
 5. Follow the PA300 wiring schematic as illustrated in the diagram below.
 6. From the positive terminal: connect the post to the positive wire of the output load or device to be monitored.
 7. From the negative terminal: connect post to ground.
 8. Place PA300 in hole at the desired position and tighten until flush & secure.
 9. Reconnect the battery.
- The installation is complete.



*AS RECOMMENDED BY THE BLOWER/PUMP MANUFACTURER



PA300SQW- Square white



PA300SQB - Square Black



PA300RDW - Round White



PA300RDB - Round Black

Operating Instructions

- When the device to be monitored is turned on, it will apply power to the PA300 and the last selected time setting (1, 2, 3, 5, 10, or 15 min.) will illuminate.
- The last selected time setting is stored in memory so it repeats every time the device being monitored is activated.
- While powered, pressing the SET DELAY button will change the timing selection.
- When the monitored device is left on longer than the selected time setting, the audible alarm will sound as a reminder to shut off the device.
- The MUTE button allows the operator to override the audible alarm and continue running the device.
- Pressing the MUTE button resets the internal timer and the selected time setting is repeated again before alarming.

PURCHASE INFORMATION

Model #	Size	Color	Bezel	Voltage	Warranty
PA300RD	2 3/8" Diameter x 2 5/8" Deep	Black or White	Black or White Plastic	12Vdc	2 years
PA300SQ	2 3/8" W x 2.5" H x 2" D	_____	_____	12Vdc	_____
PA300-24RD	2 3/8" Diameter x 2 5/8" Deep	_____	_____	24Vdc	_____
PA300-24SQ	2 3/8" W x 2.5" H x 2" D	_____	_____	24Vdc	_____

Water Witch, Inc. PO Box 710447 Santee, California 92072
1-800-654-4783 e-mail: info@WaterWitchInc.com www.WaterWitchInc.com