



MEMBER
ABYC[®]
Setting Standards for Safer Boating

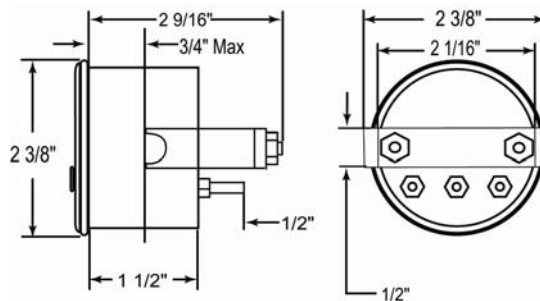
HM 700 series Digital Hour Meter with Trip Reset



How do you know when it's time for a tune up, or when it's time to change your oil, or perform routine maintenance? Knowing when to do preventive maintenance can be just as important as knowing what to do and how to do it. What if you did not have an odometer? The solution is the HM700 electronic digital hour meter with a trip reset. This hour meter is not only accurate but has no moving parts. Offered in either round or square design, the large L.E.D. display is easy to read. Use the trip reset to keep a maintenance schedule or for an alternative method for measuring gas consumption. Scrolling total counts up to 10,000 hours while the trip counts up to 99.9 hrs. Its time to take the guess work out of maintaining your engine.

FEATURES & BENEFITS

- *Microprocessor controlled*
- *No moving parts to fail -no wear*
- *Easy to read L.E.D. display*
- *Total counts up to 9,999 hours*
- *Trip counts up to 99.9 hours*
- *12Vdc or 24/32Vdc models available*
- *Alternate way to measure gas consumption*
- *Exceeds both United States Coast Guard and U.L. Standards*



Round Bezel

SPECIFICATIONS

Power Required: 12Vdc (HM700)
 24Vdc (HM700-24)

Power used: .150 Amps (when display is on)

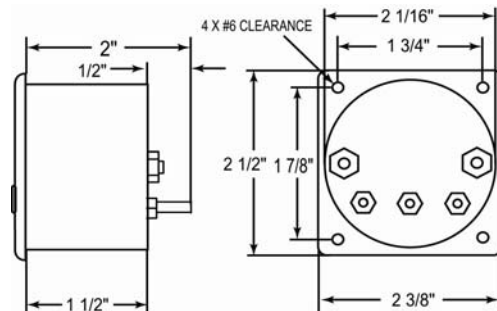
Square: 2.375" W x 2.5" H x 2" D

Round: 2.375" Diameter x 2.56" Deep

Weight: 5.4 ounces

Max Total Hrs: 9,999 hours

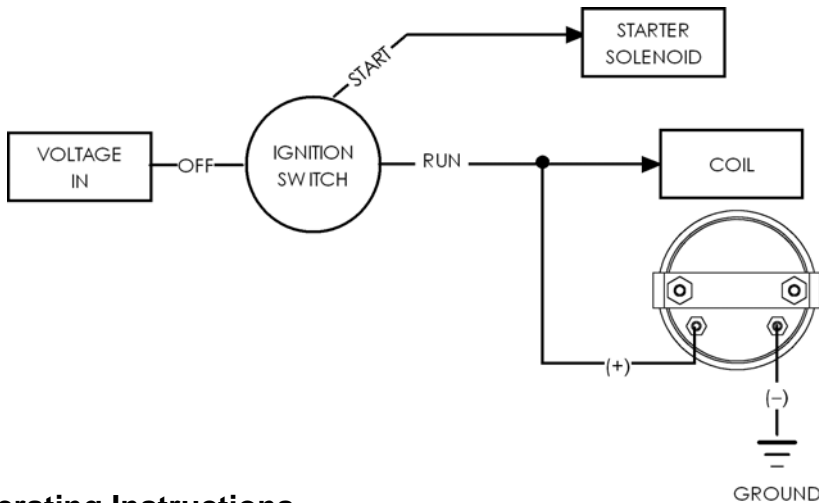
Max Trip Hrs: 99.9 hours



Square Bezel

Installation / Wiring Instructions

1. Disconnect the battery.
2. The HM700 requires a 2 1/16" (53 mm) mounting hole with a maximum dash / bulkhead thickness of .75" (19mm) and a depth of approx 2 3/4"
3. Select a mounting location for the HM700 which is easy to see and clear of wires or other obstructions.
4. Cut the opening, de-burr the hole and check that the HM700 will properly fit. **DO NOT FORCE INTO HOLE.**
5. Follow the HM700 wiring schematic as illustrated in the diagram below.
6. Wire the HM700's positive terminal to part of the wiring system that is energized when the ignition key is in the "on" position. For convenience, the hot lead could be wired to the ignition switch, an electric fuel pump or to one of the other engine instruments.
7. Wire the HR700's negative terminal to ground.
8. Place HR700 in hole at the desired position. Tighten the HM700 against the mounting surface until flush and secure. **DO NOT** over tighten.
9. Reconnect the battery.



HM700RD –Square
White



HM700RD –Round
Black



HM700RD –Round
White



HM700SQ -Square
Black

Operating Instructions

- When power is first applied, the total number of hours scrolls across the display.
- Once finished, the HM700 displays, and will keep displaying, the number of hours on the trip meter.
- Pressing the TOTAL button will re-scroll the total number of hours on the meter across it's display.
- Press and hold the TRIP button to reset the trip meter back to zero (this has no effect on the total number of hours on the meter).

PURCHASE INFORMATION

Model #	Size	Color	Bezel	Voltage	Warranty
HM700RD	2 3/8" Diameter x 2 5/8" Deep	Black or White	Black or White Plastic	12Vdc	2 years
HM700SQ	2 3/8" W x 2.5" H x 2" D	_____	_____	12Vdc	_____
HM700-24RD	2 3/8" Diameter x 2 5/8" Deep	_____	_____	24Vdc	_____
HM700-24SQ	2 3/8" W x 2.5" H x 2" D	_____	_____	24Vdc	_____